




# AV0.01

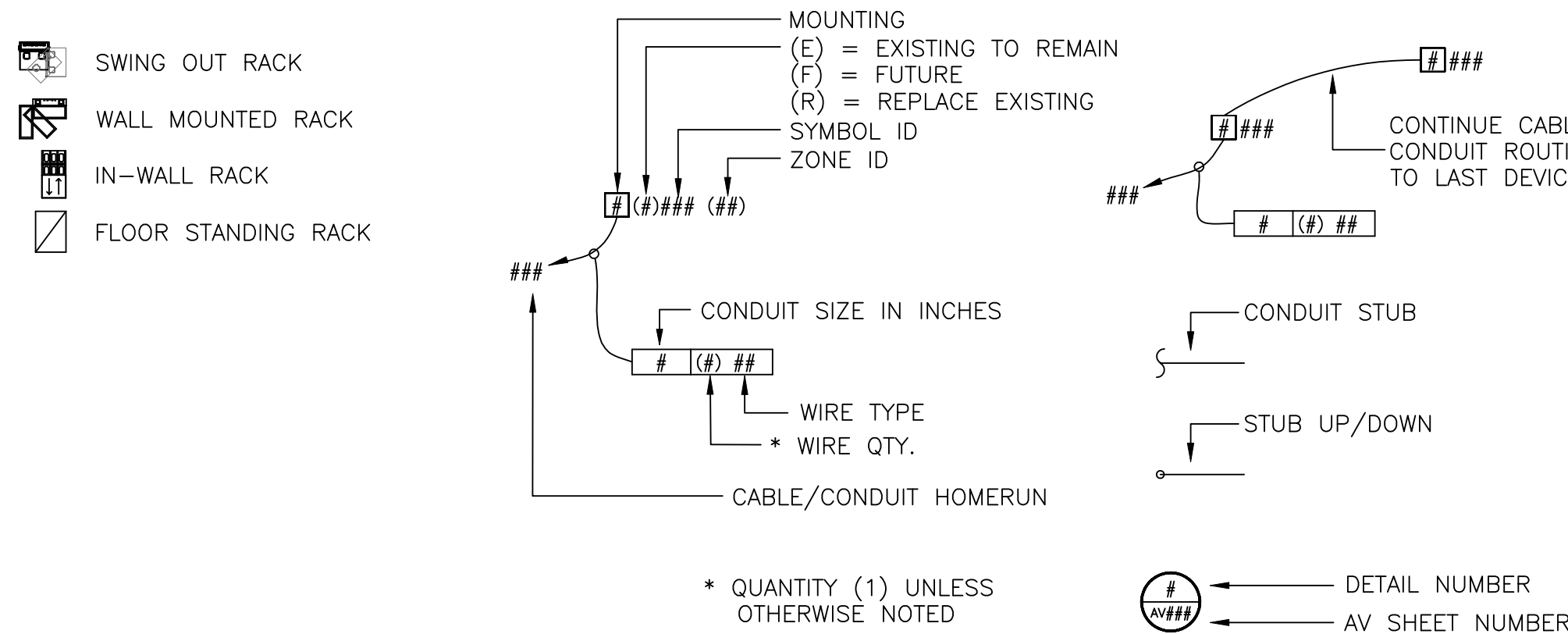
DEVICE / BOX ID									
1GMR	1 Gang Mud Ring	DAB	Digital Audio Bus	IRE	IR Emitter	PEQ	Parametric Equalizer	SUV	Summing Amplifier
2GMR	2 Gang Mud Ring	DAO	Digital to Analog Output	IRM	IR Modulator	PGM	Program Monitor	SUM	S-Video
3GMR	3 Gang Mud Ring	DAS	Digital Audio Source	IRR	IR Radiator	PI	Power Injection	SVS	Slide to Video Converter
4GMR	4 Gang Mud Ring	DAT	Digital Audio Tape Unit	IRS	Intercom Remote Station	P.L	Projector Lens	SVA	S-Video Distributor Amp
		DCC	Digital Document Camera	IRT	IR Transmitter	PJ	Projection Screen	SVH	S-Video Cassette Recorder
A	Audio	DCA	Digital Controlled Amplifier	ISON	Integrated Service Digital Network	PMP	Paging Microphone	SVS	S-Video Matrix Switcher
ABA	Audio Buffer Amplifier	DCC	Data Control Card	ITR	Isolation Transformer	PM	Podium Microphone Panel	SVMS	S-Video Switcher
AC	Audio Combiner	DCM	Digital Cart Machine			PMWS	Power Network Switch	SVSS	S-Video Separator Switcher
ACN	Audio Control Network	DCN	Divider Combant Network	J	Junction Box	POD	Podium	SW	Wall Mounted Speaker
ACR	Audio Control Relay	DCPU	Digital Central Processing Unit			PODPU	Podium Panel	SWH	Sound With Hub
ACS	Audio Conferencing System	DD	Dimmer Doubler	KB	Keyboard	PPS	Phantom Power Supply	SWV	System Switcher
ADA	Audio Distribution Amplifier	DOC	Digital Document Camera	KM	Keyboard & Mouse	PRE	Pre Amplifier		
ADI	Audio Distribution Box	DOD	Digital Delay	KMI	Keyboard & Mouse Interface	PRK	Portable Rack	TAM	Telephone Access Module
ADO	Analogue to Digital Input	DEC	Decoder	KMK	Keyboard & Mouse Kit	PSB	Powered Subwoofer	TB	Terminal Box
ADK	Audio Ducker	DEU	Dynamic Equalizer	KMY	Keyboard, Video & Mouse	PSL	Projection Screen Control	TBC	Time Base Corrector
ADP	Adapter	DM	Dimmer Module	KVM	Keyboard, Video & Mouse Extender	PSR	Paging Station Rack Mount	TBU	Tap Back Tap
AE	Audio Extractor	DIU	Digital Interface Unit	L	Lectern	PSL	Program Select & Level Remote	TC	Transceiver
AFT	AM/FM Tuner	DJCC	Digital Jystic Camera Control	LAN	Local Area Network	PSR	Powered Speaker	TCS	Teleconferencing System
API	Audio Input Panel	DM	Digital Mixer	LC	Lighting Console	PSR	Paging Station Rack Mount	TEL	Telephone Output
AIU	Analogue Interface Unit	DMR	Dimmer Rack	LD	Line Doubler	PSW	Paging Station Wall Mount	TI	Telephone Interface
AL	Audio Left	DMX	DMX	LDP	Laser Disc Player	PTC	Programmable Time Clock	TJ	Transformer Junction Box
ALA	Assistive Listening Antenna	DMX	DMX Control Cable	LR	Line Driver	PVM	Preview Video Monitor	TM	Table Microphone
ALT	Assistive Listening Receiver	DMN	DMX Node	LDC	Lectern	PWS	Power Strip	TMB	Table Microphone Box
ALL	Assistive Listening Transmitter	DPB	DSP Publisher	LED	Light Emitting Panel	PXS	Proximity Switch	TP	Twisted Pair
AM	Audio Monitor	DRC	Door Control	LFS	Low Frequency Speaker	PZM	Pressure Zone Microphone	TPC	Touch Panel Control
AMS	Audio Monitor Speaker	DREC	Digital Recorder	LI	Lighting Interface	LA	Lighting Amplifier	TPM	Teletypewriter
AMX	Audio Mixer	DSD	Data Storage Device	LM	Line Module	RS	RGB Auto Switcher	TR	Twisted Pair Receiver
ANT	Antenna	DSP	Digital Signal Processor	LC	Lectern Panel	RC	Remote Control	TR	Tuner Receiver
AOB	Analogue Output Bridge	DSB	Digital Satellite System	LT	Lectern	ROA	RGB Distribution Amp	TCR	Transceiver
AOP	Audio Output Panel	DVB	Digital Versatile Device	LTF	Line Transformer	REC	Recorded	TS	Touch Screen
APB	Audio Patch Bay	DVHS	Digital Cassette Recorder	LTD	LCD Touch Panel	REV	Reverb	TT	Turn Table
APD	Antenna Power Distribution	DVP	Digital Video Processor	LVR	Line Voltage Regulator	RF	Radio Frequency	TTP	Table Top Panel
APM	Audio Program Monitor	DVR	Digital Video Recorder			RFA	RF Amplifier	T	Television
AR	Audio Right	DVS	Digital Video Scaler	M	Microphone	RFA	RF Antenna Splitter	TVP	TV Panel
ASP	Antenna Splitter	DWR	Drawer	MA	Master Amplifier	RFD	RF Distribution Amplifier	TVP	TV/RF Tuner
ASV	Audio Server	DAL	Digital Archive Library	MAL	Master Archive Library	RFS	RF Splitter		
ASW	Audio Switcher	EBD	Embedder	MATV	Master Antenna Television	RFT	RF Transmitter	UBC	Unbalance to Balance Converter
AT	Audio To Line	EBF	Expanded Beam Fiber Connector	MCS	Main Control System	RFTA	RF Transmuting Antenna	UC	Up Converter
ATI	Audio Teleconference Interface	EC	Expansion Card	MCT	Main Cable Tray	RGB	RGBHV	UP	User Panel
ATT	Attenuator	EDB	Electrical Distribution Box	MCV	Media Converter	RIP	Rack Input Panel	UPS	Uninterruptible Power Supply
AV	Audio Video	EDX	Effects Processor	MD	Mini Disc	RL	Rack Light	UPS	Universal Serial Bus
AVC	Audio Video Controller	ELTC	Emergency Lighting Transfer Cabinet	MDCF	Matrix Digital Card Frame	RM	Rack Mount	USBX	Universal Serial Bus Extender
AVD	Audio Video Distribution	EN	Ethernet	MOT	Motor Detector	RM	Relay Module		
AVI	Audio Video Interface	ENC	Encoder	MFR	Microphone Facility Panel	RMS	RGB Matrix Switcher	V	Video
AVN	Audio Video Network	ENG	Electronic News Gathering	MFS	MD Frequency Scanner	RPN	Rack Panel		
AVP	Audio Video Panel	EQ	Equalizer	MI	Mid Interface	RPT	Repeater	VCCSS	Volume Control / Selector Switch
AVR	Audio Video Receiver	EQB	Equipment Rack	MIX	Mixer	RST <td>RGB System Controller</td> <td>VCS</td> <td>Volume Control Amplifier</td>	RGB System Controller	VCS	Volume Control Amplifier
AXF	Audio Transformer	EXG	Expander/Gate	MX	Mixer	RSI	RGB Switching Interface	VCC	Video Conference Camera
		EXT	Extender	MMB	Monitor Keyboard Sliding Shelf	RSR	Rotating Sliding Rail System	VCR	Video Cassette Recorder
BC	Battery Charge			MM	Microphone Modules	RSW	RGB Switcher	VCU	Video Conferencing Unit
BDP	Blu-Ray Disc Player	F	Fiber	MMP	Monitor Matrix Computer			VD	Video Display
BOB	Break Out Box	FB	Floor Box	MMC	Monitor Mix Panel	S	Speaker Level	VDA	Video Distribution Amplifier
BP	Back Panel	FBS	Feed Back Suppressor	MMS	Measurement Mix Pre Amplifier	SAN	Storage Area Network	VDE	Video Decoder
		FMA	Fluor Monitor	MOD	Modulator	SAT	Satellite	VEH	Video Encoder Hub
C	Conduit	FMI	FM Antenna	MON	Monitor	SB	Sub Speaker	VF	View Finder
CAM	Video Camera	FMR	FM Receiver	MOU	Mouse	SC	Ceiling Speaker	VFX	Video Effects Processor
GAS	Cassette Deck	FMT	FM Tuner	MP	Media Panel	SCB	Cinema Speaker Bass	VIC	Visual Concart
GAS	Cassette Deck Recorder	FMTA	FM Transmitting Antenna	MPS	Microphone Pre-Amplifier	SCD	Speaker Control Distribution	VIP	Video Input Panel
CA	Community Antenna Television	FMT	FM Transmitter	MPA	Monitor Panel	SCF	SC Fiber Connector	VLP	Video Lift Card Frame
CBT	Cable Tray	FCH	Front Of House	MPC	MotORIZED Projection Screen	SCN	Cinema Speaker	VLC	Video Lift Card Page Frame
CC	Contact Closure	FP	Facility Panel	MR	Message Repeater	SCP	System Control Pad	VM	Video Monitor
CCC	Contact Closure Card	FPL	Floor Panel	MRP	MD Recorder Player	SDB	Speaker Distribution Box	VMS	Video Matrix Switcher
CCD	CD/Cassette Deck	FRC	Fiber Receiver	MSC	Main System Controller	SER	Serial	VOL	Volume Control
CCF	Card Page Frame	FREB	File System Controller	MSF	Master Fader	SFF	Front Fill Speaker	VOP	Voice Over PAGING Module
CCU	Camera Control Unit	FTW	Fiber Tie Line	MSD	Microphone Splitter	SG	Signal Speaker	VPS	Video Patch Bay
CCB	Creator Distribution Block	FTP	Fiber Tie Panel	MSR	Microphone Splitter Rack	SH	Signal Processor	VPJ	Video Projector
CCD	Compact Disc Changer	FW	Firewire	MVS	Media Server	SH	Horn Speaker	VPJM	Video Projector Rotating Mount
CCP	Compact Disc Player	MWS	Matrix Switcher	MXP	Matrix Switcher	SHS	Shelf	VPM	Video Program Monitor
CEN	Control Module	GEN	Sync Generator	MXP	Mixer Pre-Amplifier	SIS	Site Integrated Speaker	VPS	Video System Switcher
CG	Character Generator	GEQ	Graphic Equalizer	GMQ	Gooseneck Microphone	SIB	In-Wall Speaker	VSC	Video Scan Converter
CM	Control Interface Module	GNO	Gooseneck Microphone	NADU	Network Audio Distribution Amp	SJW	Speaker Junction Box	VSL	Video Slicer
CI	Control Interface Unit	NET	Network Outlet	NAU	Network Audio Unit	SL	Speaker Line Array	VSP	Video Split Processor
CL	Camera Lens	HDTV	High Definition Television	NHB	Network Hub	SMR	Stage Manager Panel	VSPC	Video Screen Panel Control
CM	Card Module	HWD	Hardware	NI	Network Interface	SMP	Stage Manager Rack	VSS	Video Server
CMC	Control Module Extended	HFS	High Frequency Speaker	NMCPU	Network Manager CPU	SMS	Scaling Matrix Switcher	VST	Video Switcher
CME	Ceiling Microphone	HHM	Hand Held Microphone	NSG	Nose Gate	SMS	Satellite Multiswitch	VT	Video Tie Line
CNI	CobraNet	HRP	Headphone Remote Station	NSS	Network Source Switch	SMX	Splitter Mixer		
CO	Control Network	HBB	Headset Remote Box	NT	Network Switch	SN	Senior Network Interface	WAD	Wireless Antenna Distribution
CO	Cordic Unit	HS	Headset	NVS	Network Switch	SP	Speaker	WB	White Board
CON	Converter	HTS	Home Theater System			SPCL	Speaker Cluster	WBC	Window Blind Control
CP	Conduit Pocket			OPJ	Optical Projector	SPG	Program Speaker	WBP	Wireless Belt Pack
CPIS	Control Plug In Station	IAA	Integrated Audio Amplifier			SPJ	Slide Projector	WER	Wireless Ethernet Router
CPL	Compressor/ Limiter	IBP	Intercom Belt Pack	P	Power	SPN	Stage Panel	WFM	Waveform Monitor
CPP	Central Processing Processor	IC	Intercom	PC	Power Amplifier	SPK	Speaker Patch Panel	WGA	Wireless Gate Antenna
CPN	Central Processing Unit	ICS	Intercom Station	PAD	Pad	SPT	Speaker Processor	WGM	Wireless Gateway
CRK	Control Rack	ID	Interactive Display	PB	Push Button	SPR	Speaker Portable	WLG	Wireless Microphone
CSF	Call Signal Flasher	IFC	Interface Card	PBR	Play Back Rack	SRA	Stereo Receiver Amp	WLU	Wireless Unit
CT	Control	IHC	Intercom Handset	PC	Personal Computer	SS	Surround Sound Speaker	WM	Wireless Mouse
CTN	Cable Tuner	IHS	Intercom Head Set	PCD	Personal Computer Control	SSA	Solid State Audio Source	WMA	Wireless Mic Antenna
CIS	Circuit Board Cleaning System	ICD	Intercom Card Station	PCC	Projector Conditioner	SSD	Sliding Shelf	WMA	Wireless Mic Antenna Panel
CVM	Computer Video Monitor	IOP	Input/Output Panel	PCLD	Projector Controller With Line Doubler	SSV	Streaming Server	WMS	Wire Manager
		IR	Infrared	PD	Plasma Display	SSW	Serve Switch	WMSK	Wireless Mic Keyboard Antenna
DA	Distribution Amp	IRB	IR Broadcast	PDL	Plasma Display Lift	STU	Satellite Tuner	WMKS	Wireless Mouse Keyboard Antenna

## ABBREVIATIONS

A 0	Above Zero Floor Level			GC	General Contractor	OC	On Center	SHP	Shielded Pan
ACT	Above Counter Top	DIA	Diameter			OD	Outer Diameter	SIM	Similar
AFB	Above Floor Below	DR	Door	HR	Home Run	OFCI	Owner Furnished Contractor Installed	SM	Stages Manager
AFC	Above Finished Ceiling					OFE	Owner Furnished Equipment	STD	Standard
AFF	Above Finished Floor	(E)W#	Existing	W	In Wall	OFOI	Owner Furnished Owner Installed		
AH	Above Header	E.C.	Empty Conduit					TST	Test Set
AS	Above Slab	EC	Electrical Contractor	LP	Lightning Protector	PF	Press Feed	Typ	Typical
		EL	Elevation	LRR	Lightning Room Rack	P/O	Pan Of		
BFC	Below Finished Ceiling	ELEC	Electrical	LTO	Lighting	POC	Point of Connection	UBC	Uniform Building Code
BGM	Background Music	EOL	End Of Line			PRG	Program	UNO	Unless Otherwise Noted
BOH	Back Of House	EQUIP	Equipment	MISC	Miscellaneous	PROJ	Project		
BTU	British Thermal Units			MOM	Momentary	PS	Pull String	VIF	Verify In Field
		FAN	Fan Panel	MTD	Mounted	PSCH	Project Standard Control Height		
CAB	Cabinet	FBO	Furnished By Owner	MTL	Metal	PSRH	Project Standard Receipt Height	WP	Weather Proof
CATV	Cable TV	FCA	Finished Ceiling Above			PSSH	Project Standard Switch Height		
CBC	California Building Code	FIN	Finished	NC	Normally Closed	PWR	Power		
CL	Center Line Building Code	FOH	Front Of House	NIC	Not In Contact				
CLG	Ceiling	FSF	Folding Shelf	NO	Normally Open	RCP	Reflected Ceiling Plan		
CM	Construction Manager	(F)	Future	NTS	Not To Scale				
CO	Conduit Only					SECT	Section		

## FACILITY INPUT SYMBOL SCHEDULE AND DESCRIPTIONS

- ☐ F FLOOR MOUNTED  
☐ W WALL MOUNTED  
☐ C CEILING MOUNTED  
☐ I INTEGRATED  
 (MILLWORK, PODIUM, TABLE)  
☐  BOX MOUNTED BELOW  
☐  BOX MOUNTED ABOVE  
☐  EXISTING EQUIPMENT



## WIRE SCHEDULE

NOTE: CONTRACTOR TO USE PLENUM RATED CABLE WHERE REQUIRED BY CODE

TYPE	APPLICATION	DESCRIPTION (FIXED INSTALL CABLE)	O.D.	MANUF.	PART NO.
A1	AUDIO ANALOG/DIGITAL CABLE	ANALOG/DIGITAL AUDIO CABLE, MICROPHONE AND LINE LEVEL WIRING, LESS THAN 24" DBU. FROM 20HZ TO 20KHZ @ 12 AWG, IMPEDANCE 110M $\pm$ 20%, CAPACITANCE 36pF/FT, 100% SHIELDED, STRANDED TWISTED PAIR	0.177	BELDEN	18006
C1	CRESTRON CONTROL CABLE	SYSTEM CONTROL CABLE, AMX-CRESTRON / DATA / 12 AWG 1PR SHIELDED, CAPACITANCE 12.5 pF/FT, STRANDED / (PWR) 12 AWG, 2 CONDUCTOR STRANDED	0.330	CRESTRON	CRESTNET-HP
C2	CONTROL/PWR SUPPLY DATA SERIAL CABLE RS232-485	CONTROL CABLE ACDC, 22 AWG, 2 PAIR, TWISTED, TINNED COPPER SERIAL DATA CABLE 20' AWG, TINNED COPPER, 100% FOIL, 65% TC BRAID SHIELD, TWISTED 2 PAIR	0.233 0.220	BELDEN	8744 9132
D3	CAT 6 DATA NETWORK CABLE	CATEGORY 6 DATA CABLE, 12 AWG, UNBONDED PAIR CABLES, SOLID BARE COPPER, MAX ATTENUATION 20.5db/100m @ 200MHz, MAX DELAY SKEW 45ns/100 m, NOM MUTUAL CAPACITANCE @ 100Hz 15pF/FT, MAX DC RESISTANCE 6.2Q/100m	0.220	BELDEN	2412
M8	A/V S/P CABLE	FOUR TWISTED PAIR, POLYESTER TAPE, DRAIN, SHIELD, BRAC, RPOCORD AND OVERALL PVC JACKET, CAPACITANCE 30pF/FT, LINE SKEW 45ns/100m	0.244	CRESTRON	DM-CBL-SG
R1	LOW LOSS DS0 WIRELESS	RGS6Q, 20 AWG, 50/2, 95% BRAIDED SHIELD, NOM ATTN-21.5dB/100ft @ 1GHz	0.195	BELDEN	8262
S2	SPEAKER	LOUDSPEAKER LEVEL OR CIRCUIT WIRING GREATER THAN +24dbm, FROM 20HZ TO 20KHZ, 14 AWG, STRANDED, TWISTED PAIR WITH PVC JACKET.	0.260	BELDEN	5100UP
S3	SPEAKER	LOUDSPEAKER LEVEL OR CIRCUIT WIRING GREATER THAN +24dbm, FROM 20HZ TO 20KHZ, 12 AWG, STRANDED, TWISTED PAIR WITH PVC JACKET.	0.302	BELDEN	5000UP
V10	HDMI CABLE	HDMI CABLE, 100D, 24AWG	0.750	EXTRON	HDMI PRO SERIES

## PROJECT

**KoningEizenberg Architecture**  
1454 25th St, Santa Monica, CA 90404  
310.828.6131 [info@kearch.com](mailto:info@kearch.com)  
310.828.0719 fax [www.kearch.com](http://www.kearch.com)

ARCHITECT'S PROJECT NO.

1001

## ARCHITECT

All designs, ideas, arrangements and plans indicated by these drawings are the property and copyright of the Architect and shall neither be used on any other work nor be disclosed to any other person for any use whatsoever without written permission.

Koning Eisenberg Architecture and/or its principals and employees waives any and all liability or responsibility for problems that may occur when these plans, drawings, specifications, and/or designs are followed without the professional's guidance with ambiguities, or conflicts which are alleged.



**Veneklasen Associates**  
Consultants In Acoustics | AV | IT | Environmental Noise  
1711 Stoddard Street  
Santa Monica, CA 90404  
(310) 450-1733  
[www.veneklasen.com](http://www.veneklasen.com)

## CONSULTANT



City of  
**Santa Monica**  
Architecture Services

1437 4TH STREET, SUITE 300  
SANTA MONICA, CA 90401  
TEL. ( 310 ) 458-2205  
FAX. ( 310 ) 399-1541  
architecture@smgov.net

DATE : \_\_\_\_\_ 20\_\_

SUBMITTED BY : \_\_\_\_\_

DATE : \_\_\_\_\_ 20 \_\_\_\_

APPROVED BY : \_\_\_\_\_

CITY OF SANTA MONICA  
DEPARTMENT OF PUBLIC WORKS

REVIEWED BY: DATE: 20

REVIEWED BY :      DATE :      20

REVIEWED BY :      DATE :      20

## CITY CLIENT

3	07/16/12		BULLETIN 1
	06/21/12		PLAN CHECK 2
	05/07/12		PLAN CHECK 1
2	03/06/12		ADDENDUM 3
1	02/21/12		ADDENDUM 2
NO.	DATE	BY	DESCRIPTION

## REVISIONS

## ISSUE

## 100% CONSTRUCTION DOCUMENTS

DATE  
07/16/2012

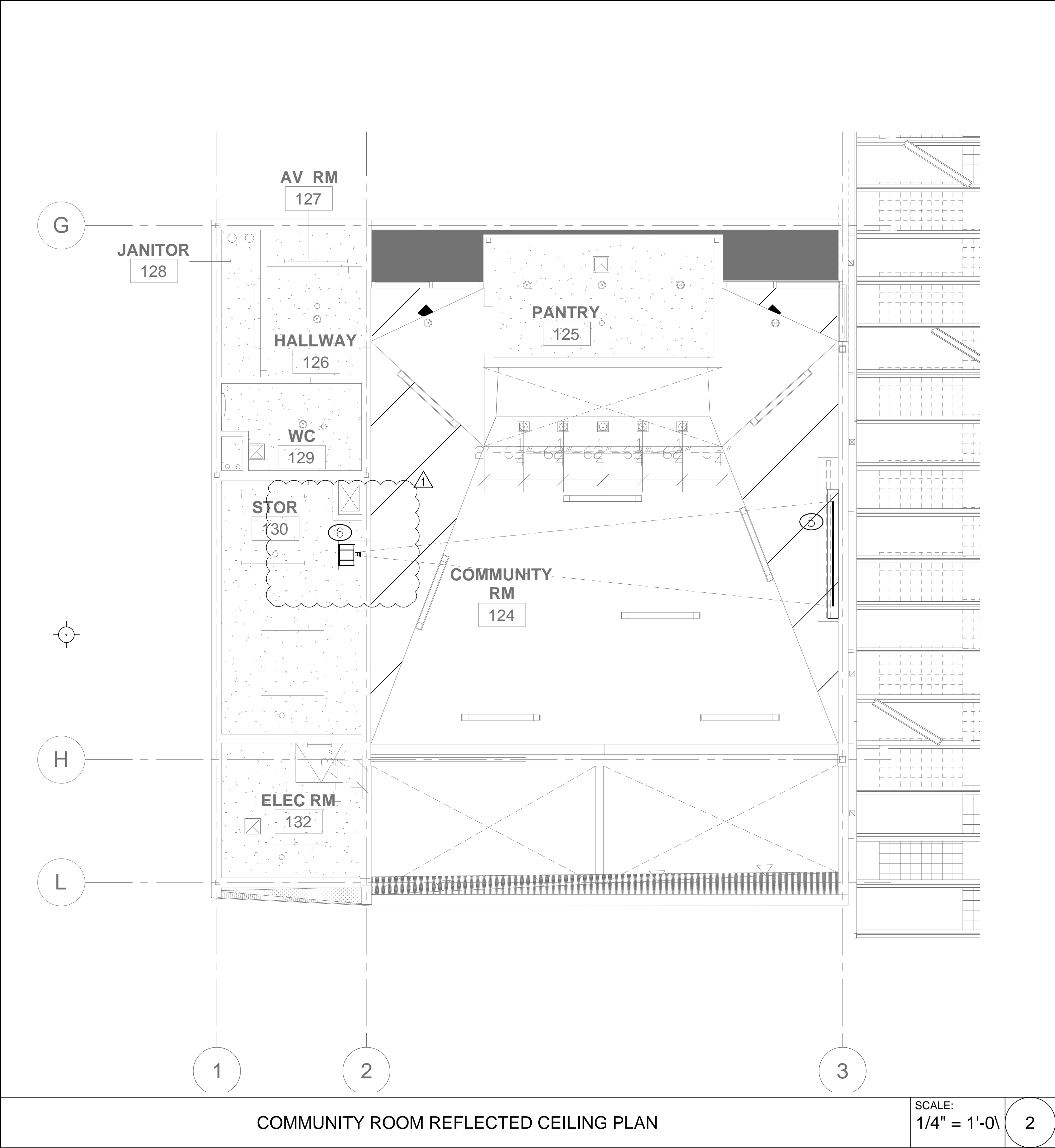
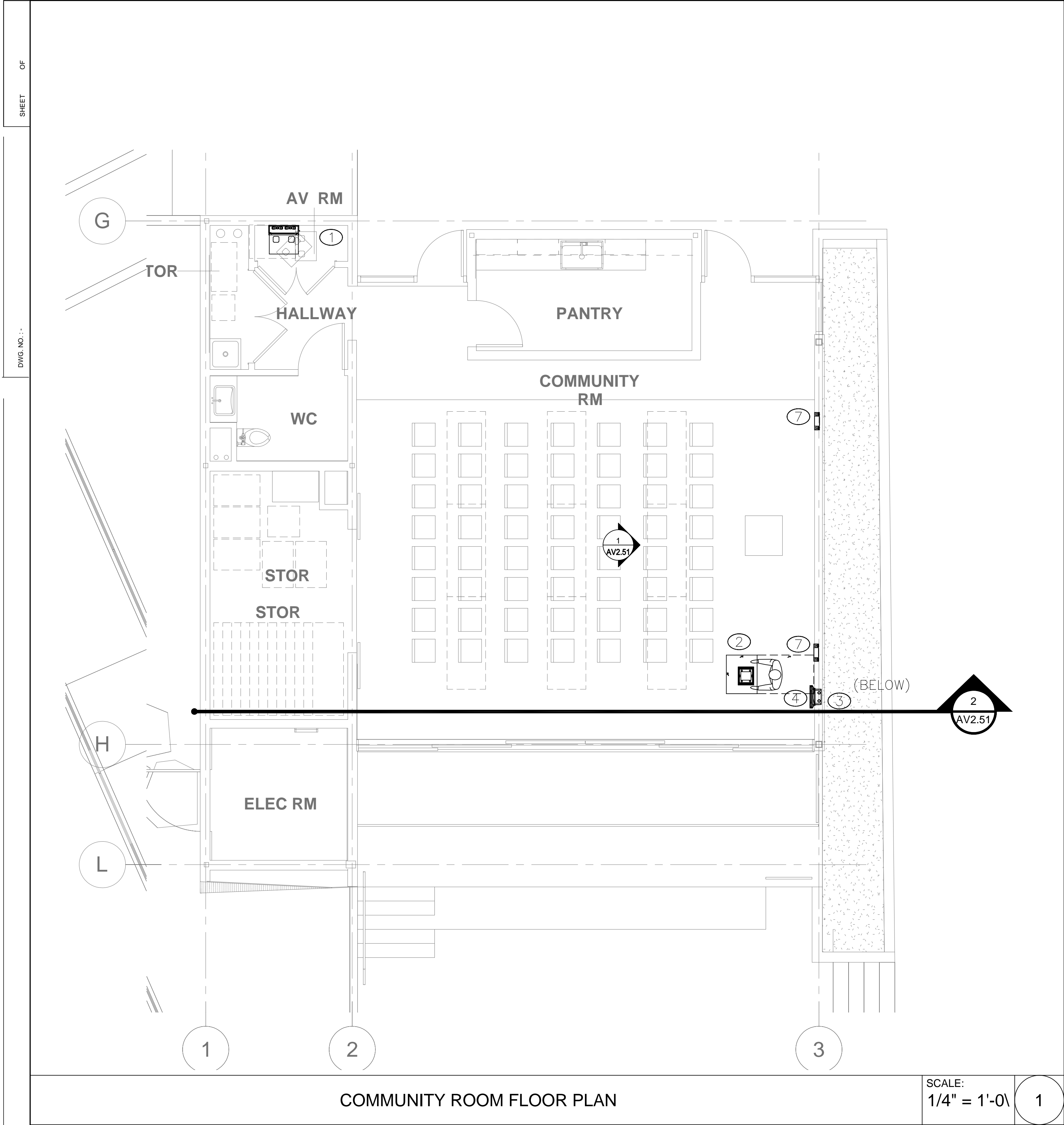
DRAWING NO. **6693**

SHEET TITLE

ABBREVIATIONS  
NOTES AND  
SYMBOLS

SHEET NO.

# AV0.02



AV EQUIPMENT NOTES:

- ① EQUIPMENT RACK
  - \*PRESENTATION SWITCHER
  - \*POWER AMPLIFIER
  - \*BLU-RAY/DVD PLAYER WITH TUNER
  - \*CONTROL SYSTEM
  - \*ASSISTIVE LISTENING SYSTEM
  - \*WIRELESS MICROPHONE SYSTEM
- ② LECTERN
  - \*GOOSENECK MICROPHONE
  - \*AV INPUT PANEL
- ③ AV WALL BOX
  - \*④ MIC INPUTS
  - \*① LINE OUTPUT
  - \*① DIGITAL AND ANALOG VIDEO INPUT
- ④ DOCKABLE TOUCH PANEL
- ⑤ 16:10 94" DIAG. RECESSED PROJECTION SCREEN
- ⑥ WXGA VIDEO PROJECTOR (MOUNTED ON WALL SEE DETAIL 1 ON AV6.01)
- ⑦ IN-WALL SPEAKER FOR SOUND REINFORCEMENT AND PAGING SYSTEMS
- ⑧ IN-WALL PAGING SPEAKER
- ⑨ RECESSED CEILING SPEAKER FOR PAGING

PICO BRANCH LIBRARY

2201 Pico Blvd.  
Santa Monica, CA 90404

PROJECT

KoningEizenbergArchitecture

1454 25th St. Santa Monica, CA 90404

310.828.6131 info@kearch.com  
310.828.0719 fax www.kearch.com

ARCHITECTS PROJECT NO.

1001

ARCHITECT

All designs, ideas, arrangements and plans indicated by these drawings are the property and copyright of the Architect and shall neither be used on any other work nor be disclosed to any other person for any use whatsoever without written permission.

Koning Eizenberg Architecture and/or its principals and employees waives any and all liability or responsibility for problems that may occur when these plans, drawings, specifications, and/or designs are followed without the professional's guidance with ambiguities, or conflicts which are alleged.



Veneklasen Associates  
Consultants in Acoustics (AV) / Environmental Noise  
1711 Silverthorn Street  
Santa Monica, CA 90404  
(310) 458-1725  
www.veneklasen.com

CONSULTANT

City of Santa Monica  
Architecture Services

1437 4TH STREET, SUITE 300  
SANTA MONICA, CA 90401  
TEL. (310) 458-2205  
FAX. (310) 399-1541  
architecture@smgov.net

SUBMITTED BY: DATE: 20

APPROVED BY: DATE: 20

Minam Mulder,  
Architecture Services Manager  
CITY OF SANTA MONICA  
DEPARTMENT OF PUBLIC WORKS

REVIEWED BY: DATE: 20

REVIEWED BY: DATE: 20

REVIEWED BY: DATE: 20

CITY CLIENT

NO.	DATE	BY	DESCRIPTION
1	07/16/12		BULLETIN 1
2	06/21/12		PLAN CHECK 2
3	05/07/12		PLAN CHECK 1
4	03/06/12		ADDENDUM 3
5	02/21/12		ADDENDUM 2

REVISIONS

ISSUE  
100% CONSTRUCTION DOCUMENTS

DATE  
07/16/2012  
DRAWING NO. 6693

SHEET TITLE  
COMMUNITY ROOM  
EQUIPMENT PLAN

SHEET NO.  
AV1.01A

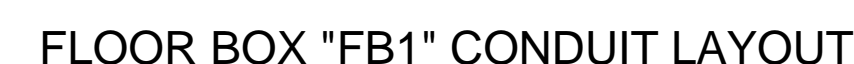




SCALE:  
1/4" = 1'-0"



SCALE:  
1/4" = 1'-0"



SCALE:  
NTS

A

Koning Eizenberg Architecture and/or its principals and employees waives any and all liability or responsibility for problems that may occur when these plans, drawings, specifications, and/or designs are followed without the professional's guidance with ambiguities, or conflicts which are alleged.



---

CONSULTANT



1437 4TH STREET, SUITE 300  
SANTA MONICA, CA 90401  
TEL. ( 310 ) 458-2205  
FAX. ( 310 ) 399-1541  
architecture@smgov.net

DATE : \_\_\_\_\_ 20\_\_\_\_  
SUBMITTED BY : \_\_\_\_\_

DATE : 20  
APPROVED BY :  
Miriam Mulder,  
Architecture Course Manager

REVIEWED BY:      DATE:      20

REVIEWED BY :      DATE :      20

REVIEWED BY :      DATE :      20

CITY CLIENT

3	07/16/12		BULLETIN 1
	06/21/12		PLAN CHECK 2
	05/07/12		PLAN CHECK 1
2	03/06/12		ADDENDUM 3
1	02/21/12		ADDENDUM 2
NO.	DATE	BY	DESCRIPTION

ISSUE

## 100% CONSTRUCTION DOCUMENTS

DATE  
07/16/2012

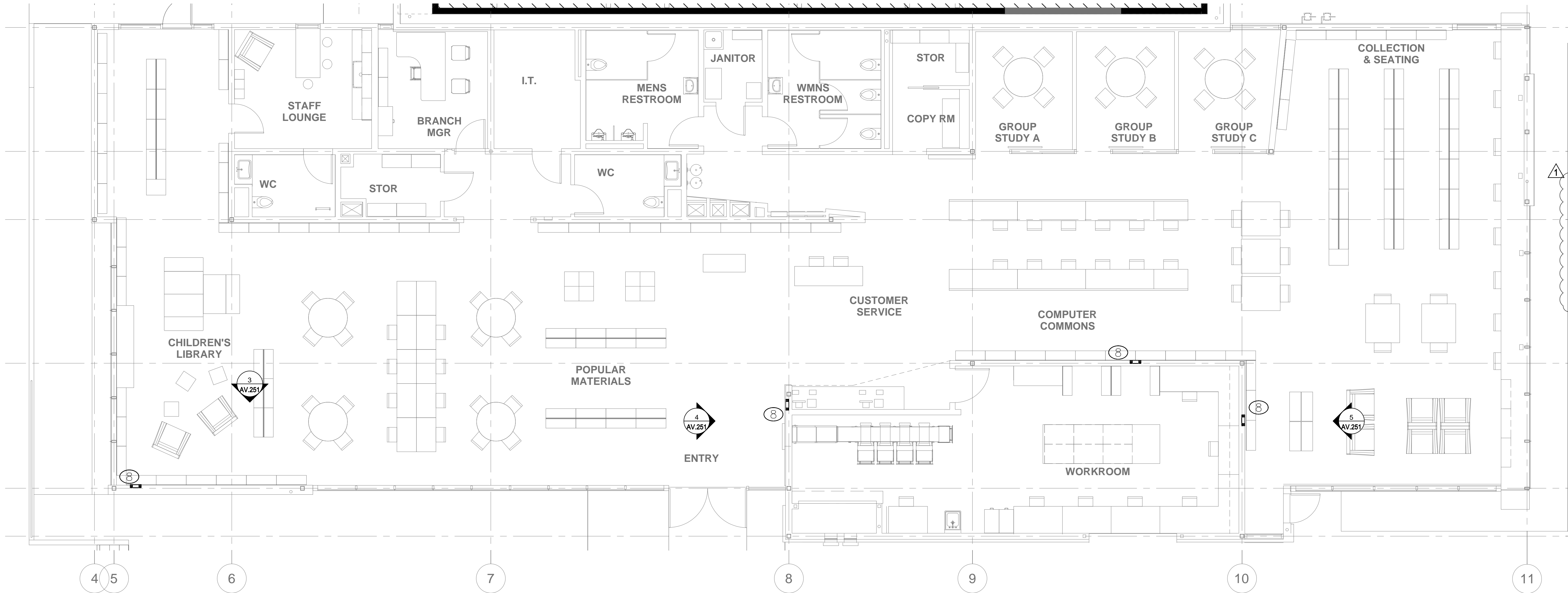
DRAWING NO. **6693**

SHEET TITLE

COMMUNITY ROOM  
INFRASTRUCTURE  
PLAN

SHEET NO. \_\_\_\_\_

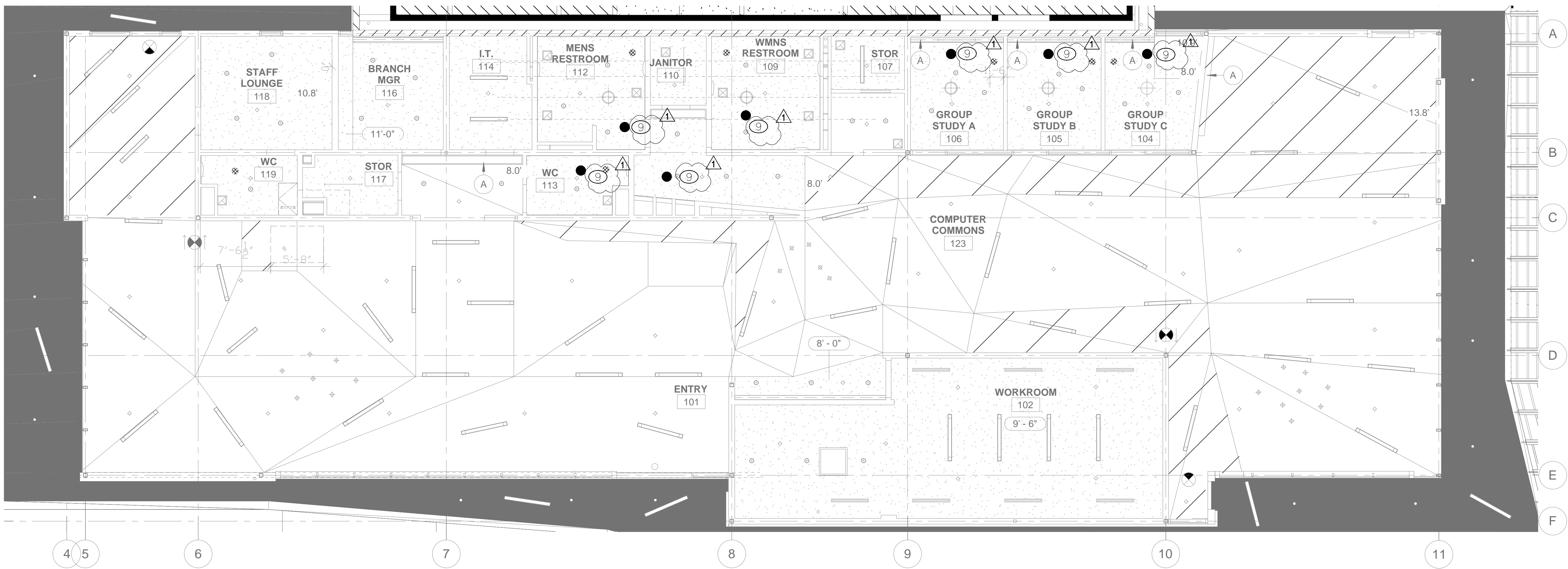
# AV1.01E



- AV EQUIPMENT NOTES:
- 1 EQUIPMENT RACK
    - \*PRESENTATION SWITCHER
    - \*POWER AMPLIFIER
    - \*BLU-RAY/DVD PLAYER WITH TUNER
    - \*CONTROL SYSTEM
    - \*ASSISTIVE LISTENING SYSTEM
    - \*WIRELESS MICROPHONE SYSTEM
  - 2 LECTERN
    - \*GOOSENECK MICROPHONE
    - \*AV INPUT PANEL
  - 3 AV WALL BOX
    - \* (4) MIC INPUTS
    - \* (1) LINE OUTPUT
    - \* (1) DIGITAL AND ANALOG VIDEO INPUT
  - 4 DOCKABLE TOUCH PANEL
  - 5 16:10 94" DIAG. RECESSED PROJECTION SCREEN
  - 6 WXGA VIDEO PROJECTOR (MOUNTED ON WALL SEE DETAIL 1 ON AV.01)
  - 7 IN-WALL SPEAKER FOR SOUND REINFORCEMENT AND PAGING SYSTEMS
  - 8 IN-WALL PAGING SPEAKER
  - 9 RECESSED CEILING SPEAKER FOR PAGING

LIBRARY FLOOR PLAN

SCALE: 3/16" = 1' 1



LIBRARY REFLECTED CEILING PLAN

SCALE: 3/16" = 1' 2

PICO BRANCH LIBRARY  
2201 Pico Blvd.  
Santa Monica, CA 90404

PROJECT  
KoningEizenbergArchitecture  
1454 25th St. Santa Monica, CA 90404  
310.828.6131 info@kearch.com  
310.828.0719 fax www.kearch.com  
ARCHITECTS PROJECT NO. 1001  
ARCHITECT

All designs, ideas, arrangements and plans indicated by these drawings are the property and copyright of the Architect and shall neither be used on any other work nor be disclosed to any other person for any use whatsoever without written permission.  
Koning Eizenberg Architecture and/or its principals and employees waives any and all liability or responsibility for problems that may occur when these plans, drawings, specifications, and/or designs are followed without the professional's guidance with ambiguities, or conflicts which are alleged.

Veneklasen Associates  
Consultants in Acoustics (AV) | Environmental Noise  
1711 Wilshire Street  
Santa Monica, CA 90404  
(310) 458-1755  
www.veneklasen.com

CONSULTANT  
City of Santa Monica  
Architecture Services  
1437 4TH STREET, SUITE 300  
SANTA MONICA, CA 90401  
TEL. (310) 458-2205  
FAX. (310) 399-1541  
architecture@simgov.net

SUBMITTED BY: DATE: 20

APPROVED BY: Miriam Mulder, Architecture Services Manager  
CITY OF SANTA MONICA  
DEPARTMENT OF PUBLIC WORKS

REVIEWED BY: DATE: 20

REVIEWED BY: DATE: 20

REVIEWED BY: DATE: 20

CITY CLIENT

NO.	DATE	BY	DESCRIPTION
1	07/16/12		BULLETIN 1
2	06/21/12		PLAN CHECK 2
3	05/07/12		PLAN CHECK 1
4	03/06/12		ADDENDUM 3
5	02/21/12		ADDENDUM 2

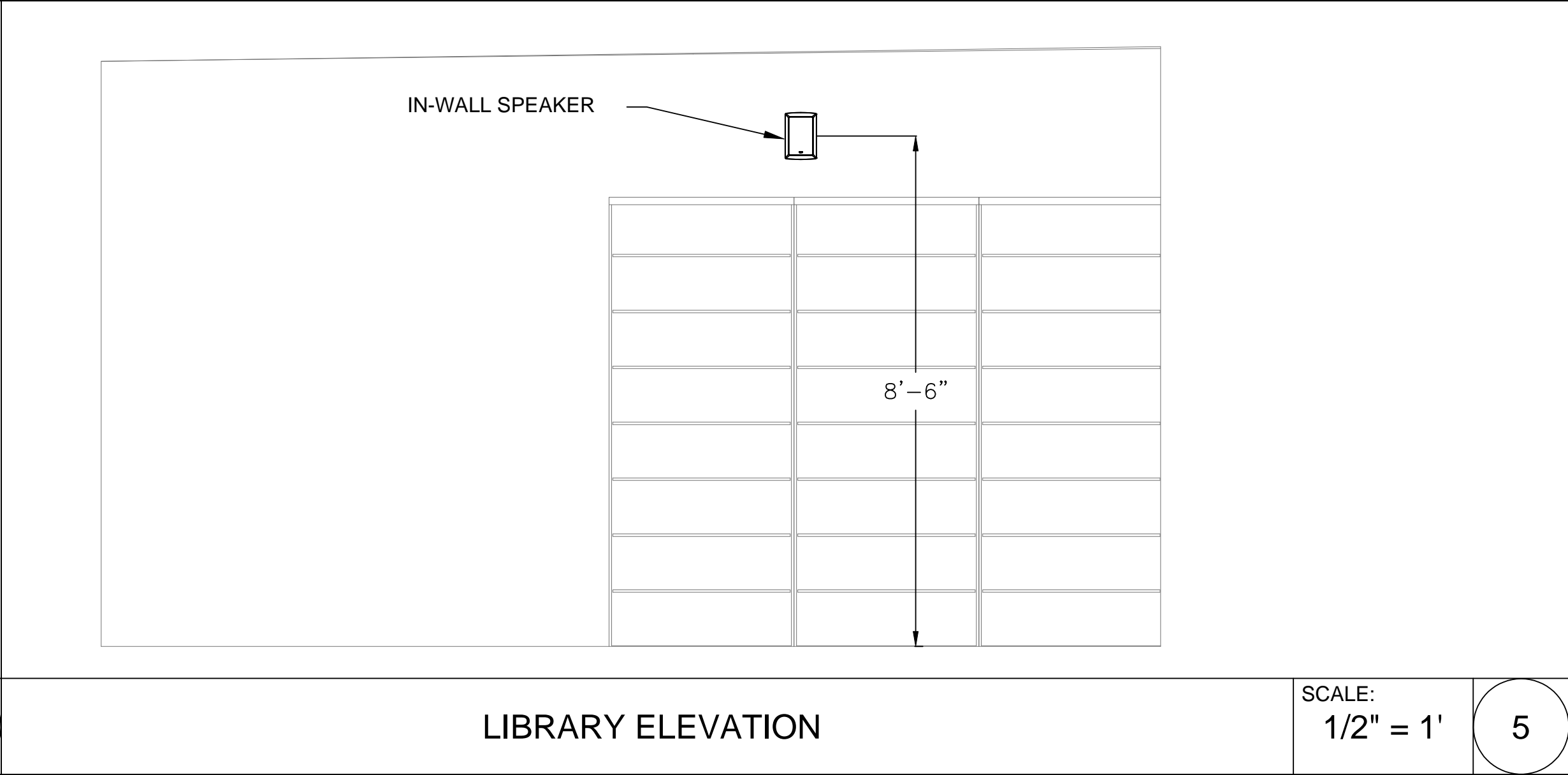
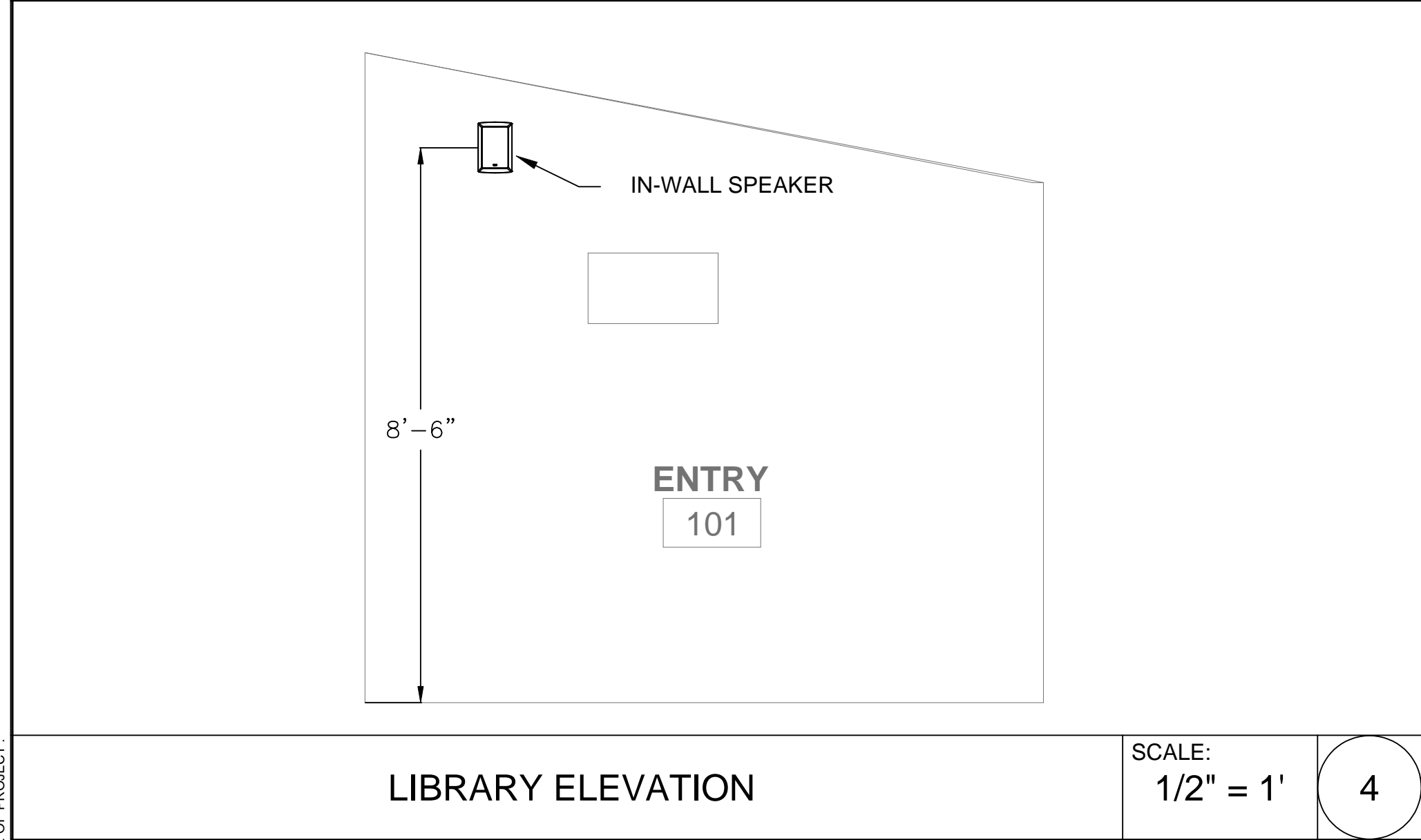
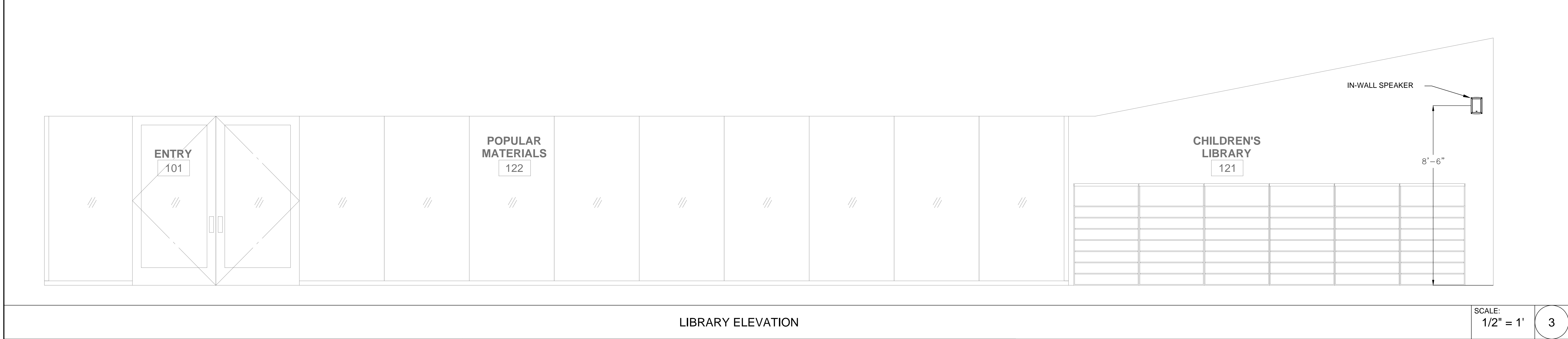
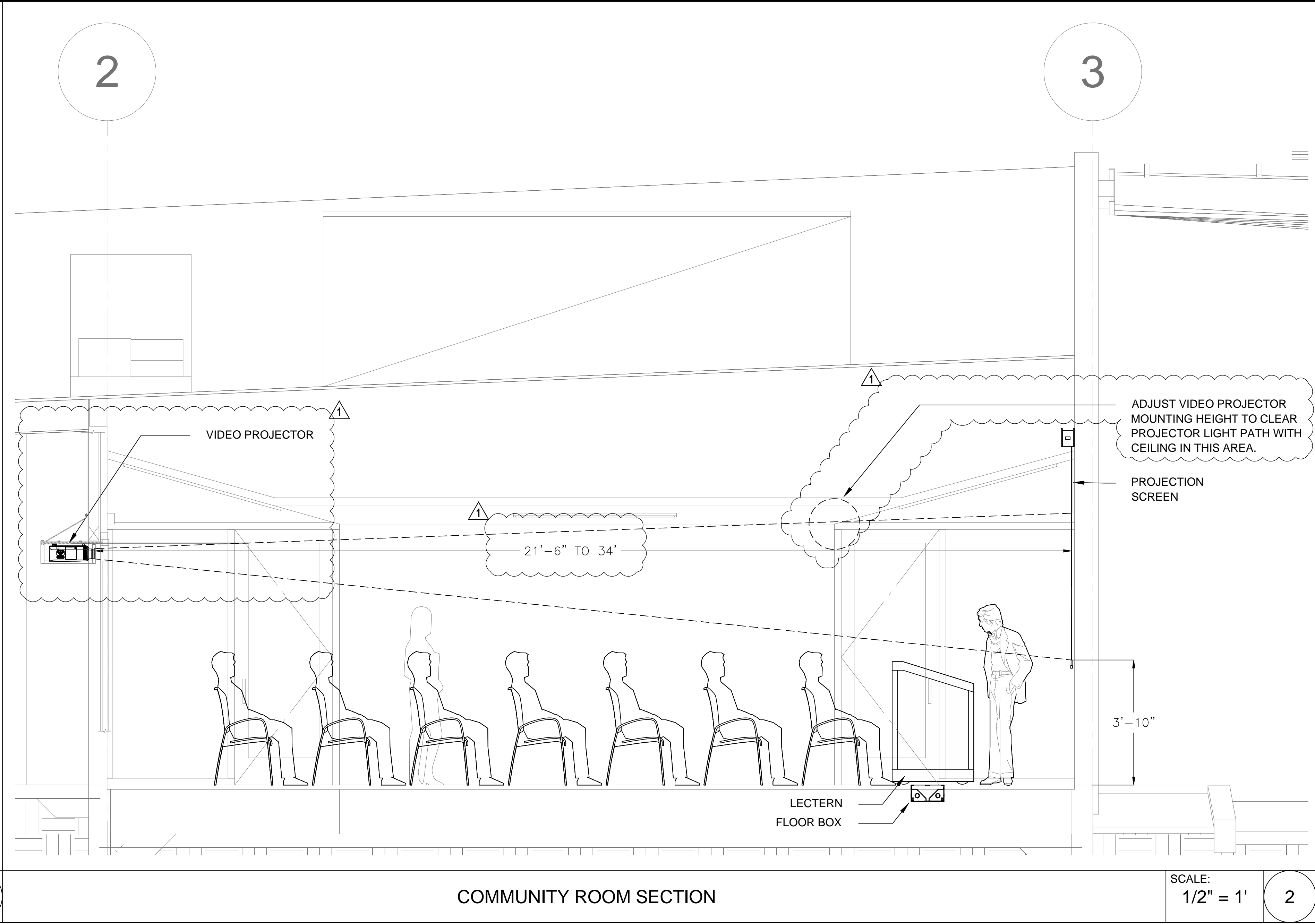
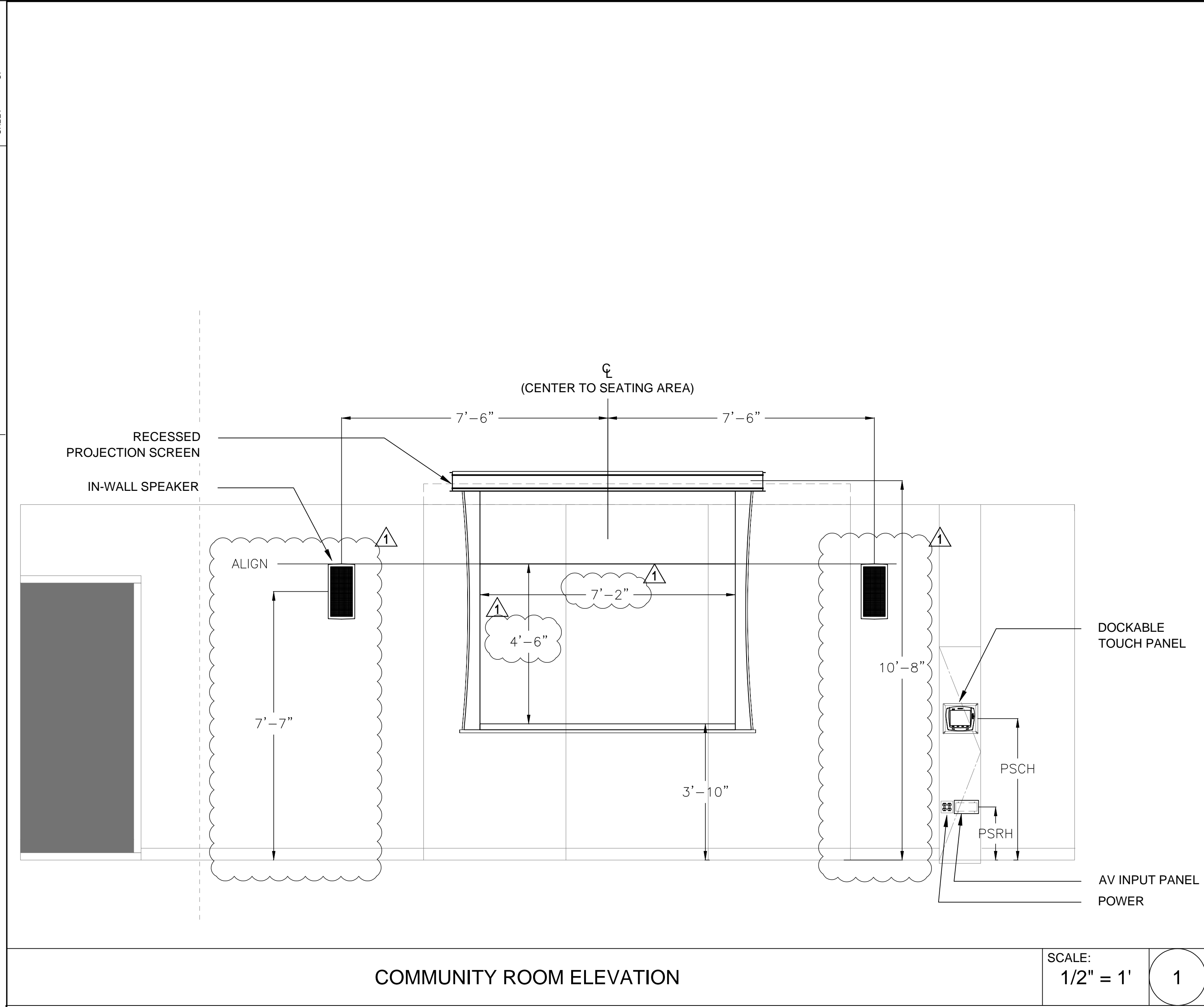
ISSUE  
100% CONSTRUCTION DOCUMENTS

DATE: 07/16/2012  
DRAWING NO. 6693

SHEET TITLE  
LIBRARY  
EQUIPMENT PLAN

SHEET NO.  
AV1.02A





**PICO BRANCH LIBRARY**  
2201 Pico Blvd.  
Santa Monica, CA 90404

PROJECT

**KoningEizenbergArchitecture**  
1454 25th St. Santa Monica, CA 90404  
310.828.6131 info@kearchd.com  
310.828.0719 fax www.kearchd.com

ARCHITECTS PROJECT NO. **1001**

ARCHITECT

All designs, ideas, arrangements and plans indicated by these drawings are the property and copyright of the Architect and shall neither be used on any other work nor be disclosed to any other person for any use whatsoever without written permission.

Koning Eizenberg Architecture and/or its principals and employees waives any and all liability or responsibility for problems that may occur when these plans, drawings, specifications, and/or designs are followed without the professional's guidance with ambiguities, or conflicts which are alleged.

**Veneklasen Associates**  
Consultants in Acoustics (AV) / Environmental Noise  
1711 Wilshire Street  
Santa Monica, CA 90404  
(310) 456-1755  
www.veneklasen.com

CONSULTANT

City of Santa Monica  
Architecture Services

1437 4TH STREET, SUITE 300  
SANTA MONICA, CA 90401  
TEL: (310) 458-2205  
FAX: (310) 399-1541  
architecture@smsgov.net

SUBMITTED BY: DATE: 20

APPROVED BY: DATE: 20  
Miriam Mulder,  
Architecture Services Manager

CITY OF SANTA MONICA  
DEPARTMENT OF PUBLIC WORKS

REVIEWED BY: DATE: 20

REVIEWED BY: DATE: 20

REVIEWED BY: DATE: 20

CITY CLIENT

NO.	DATE	BY	DESCRIPTION
1	07/16/12		BULLETIN 1
2	06/21/12		PLAN CHECK 2
3	05/07/12		PLAN CHECK 1
4	03/06/12		ADDENDUM 3
5	02/21/12		ADDENDUM 2

ISSUE

**100% CONSTRUCTION DOCUMENTS**

DATE  
07/16/2012

DRAWING NO. **6693**

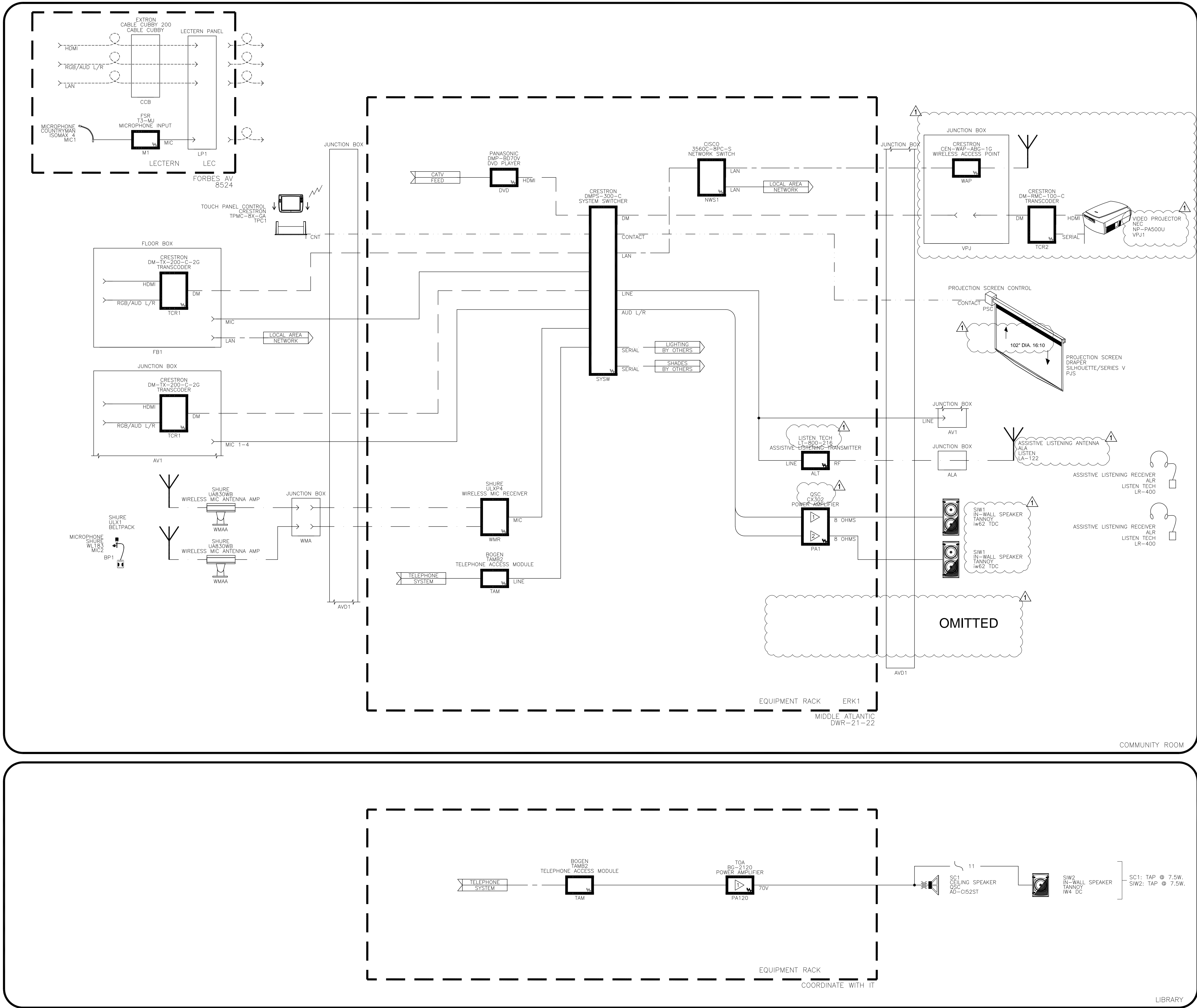
SHEET TITLE  
**SECTIONS AND ELEVATIONS**

SHEET NO.  
**AV2.51**









PICO BRANCH LIBRARY

2201 Pico Blvd.  
Santa Monica, CA 90404

PROJECT

KoningEizenbergArchitecture  
1454 25th St. Santa Monica, CA 90404  
310.828.6131 info@kearch.com  
310.828.0719 fax www.kearch.com

ARCHITECT'S PROJECT NO.

1001

ARCHITECT

All designs, ideas, arrangements and plans indicated by these drawings are the property and copyright of the Architect and shall neither be used on any other work nor be disclosed to any other person for any use whatsoever without written permission.

CONSULTANT

Veneklasen Associates  
Consultants in Acoustics (A/E) Environmental Noise  
1711 Wilshire Blvd.  
Santa Monica, CA 90404  
(310) 450-1750  
www.veneklasen.com

CITY CLIENT

City of Santa Monica  
Architecture Services  
1437 4TH STREET, SUITE 300  
SANTA MONICA, CA 90401  
TEL. (310) 458-2205  
FAX. (310) 399-1541  
architecture@smgov.net

ISSUE

100% CONSTRUCTION DOCUMENTS

DATE

07/16/2012

DRAWING NO.

6693

SHEET TITLE

SCHEMATIC  
DIAGRAM

SHEET NO.

AV3.01

REVISIONS

NO.	DATE	BY	DESCRIPTION
1	07/16/12		BULLETIN 1
2	06/21/12		PLAN CHECK 2
3	05/07/12		PLAN CHECK 1
4	03/06/12		ADDENDUM 3
5	02/21/12		ADDENDUM 2



1



*A*



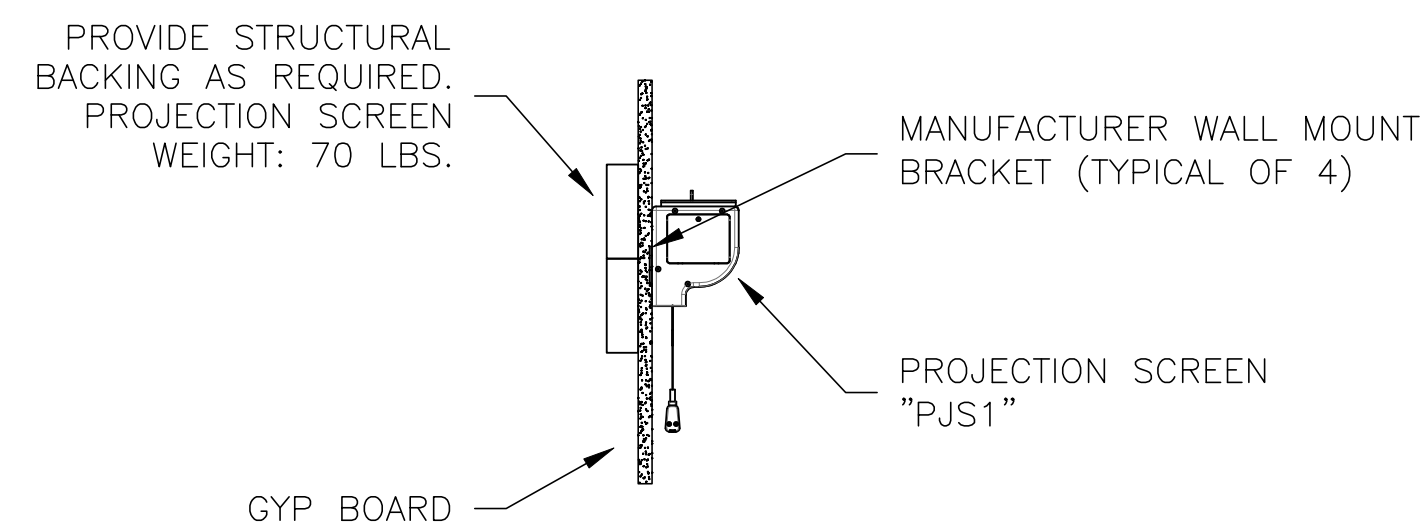
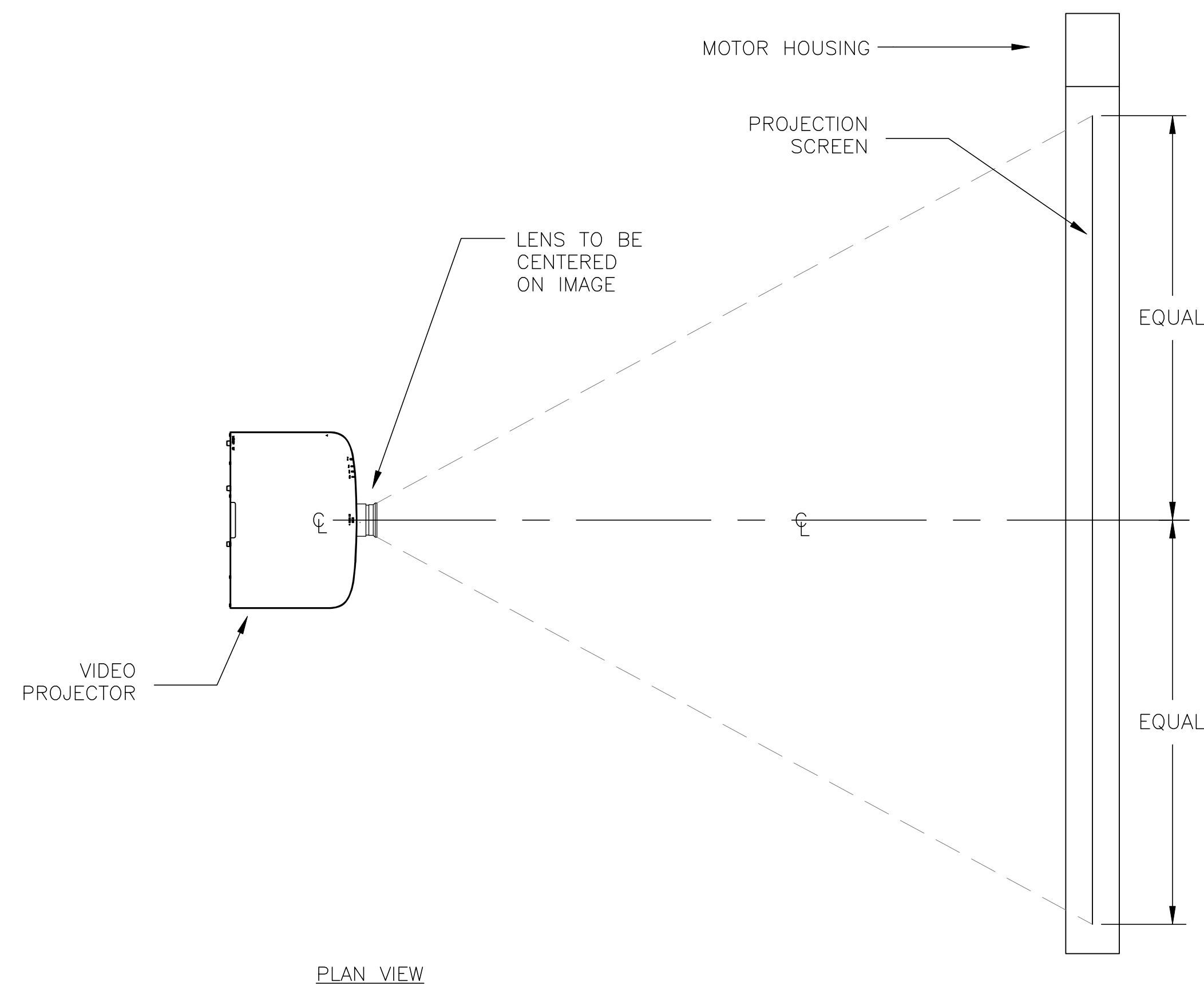
B

EQUIPMENT RACK "ERK1" ELEVATION

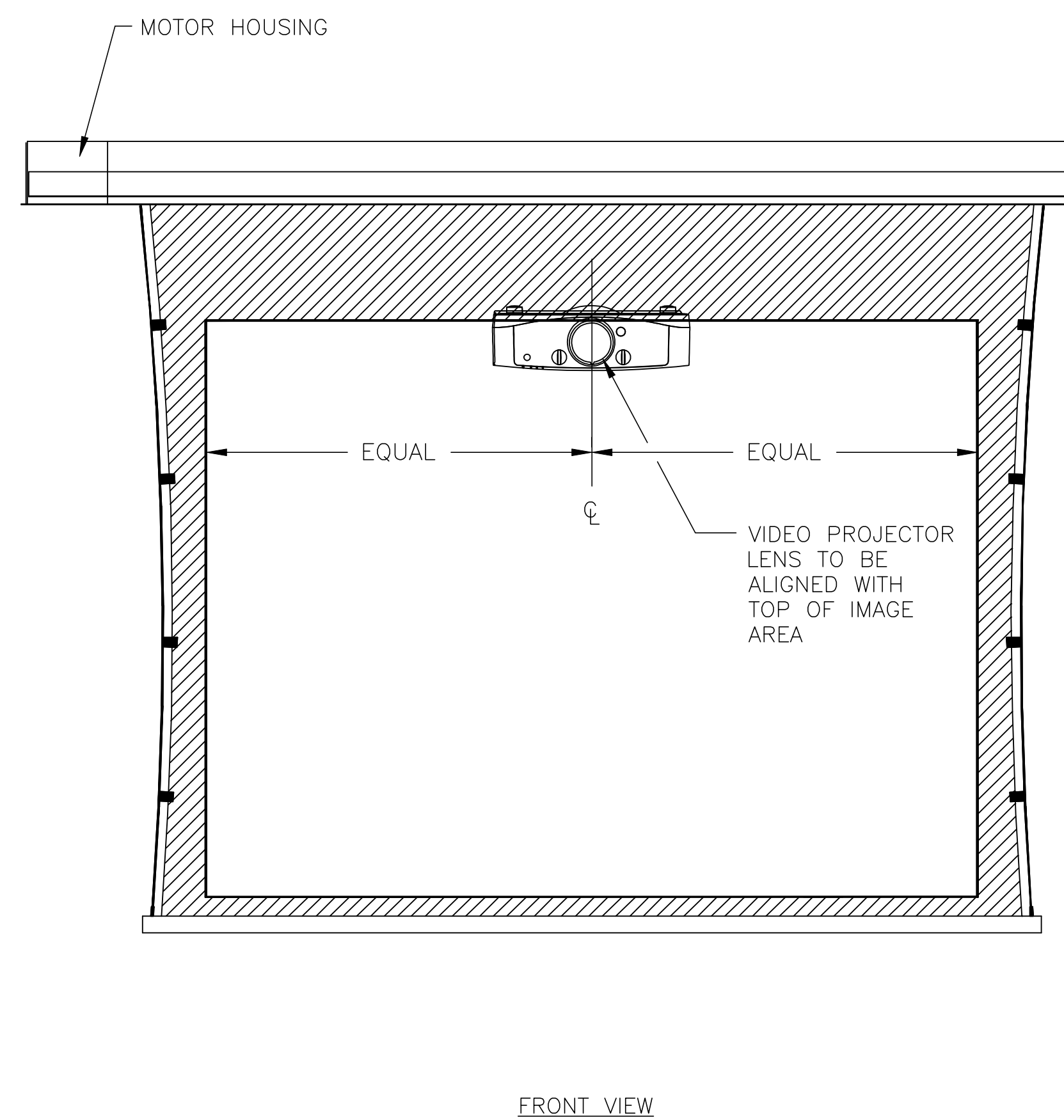
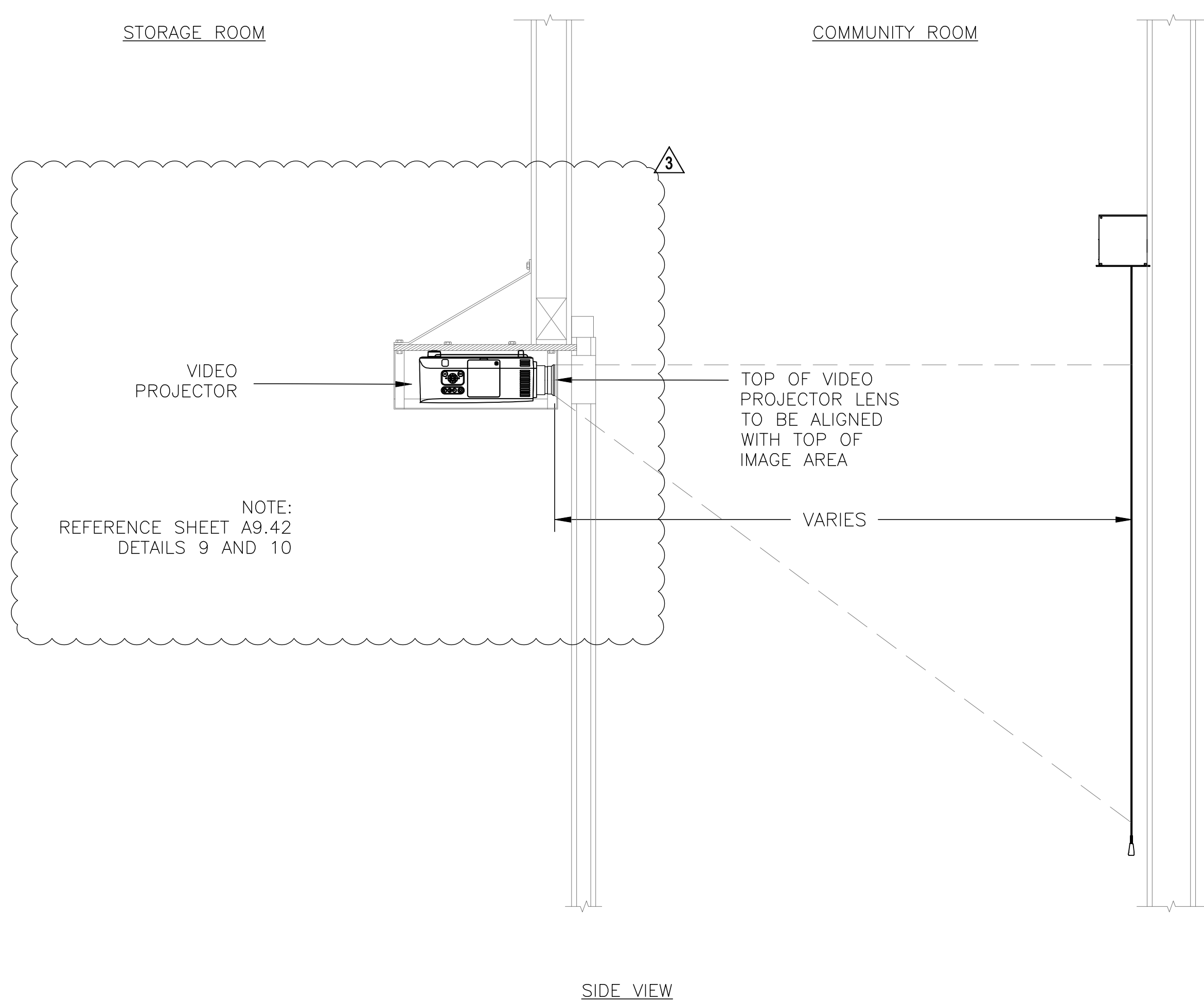
2

SHEET NO.

**AV4.51**



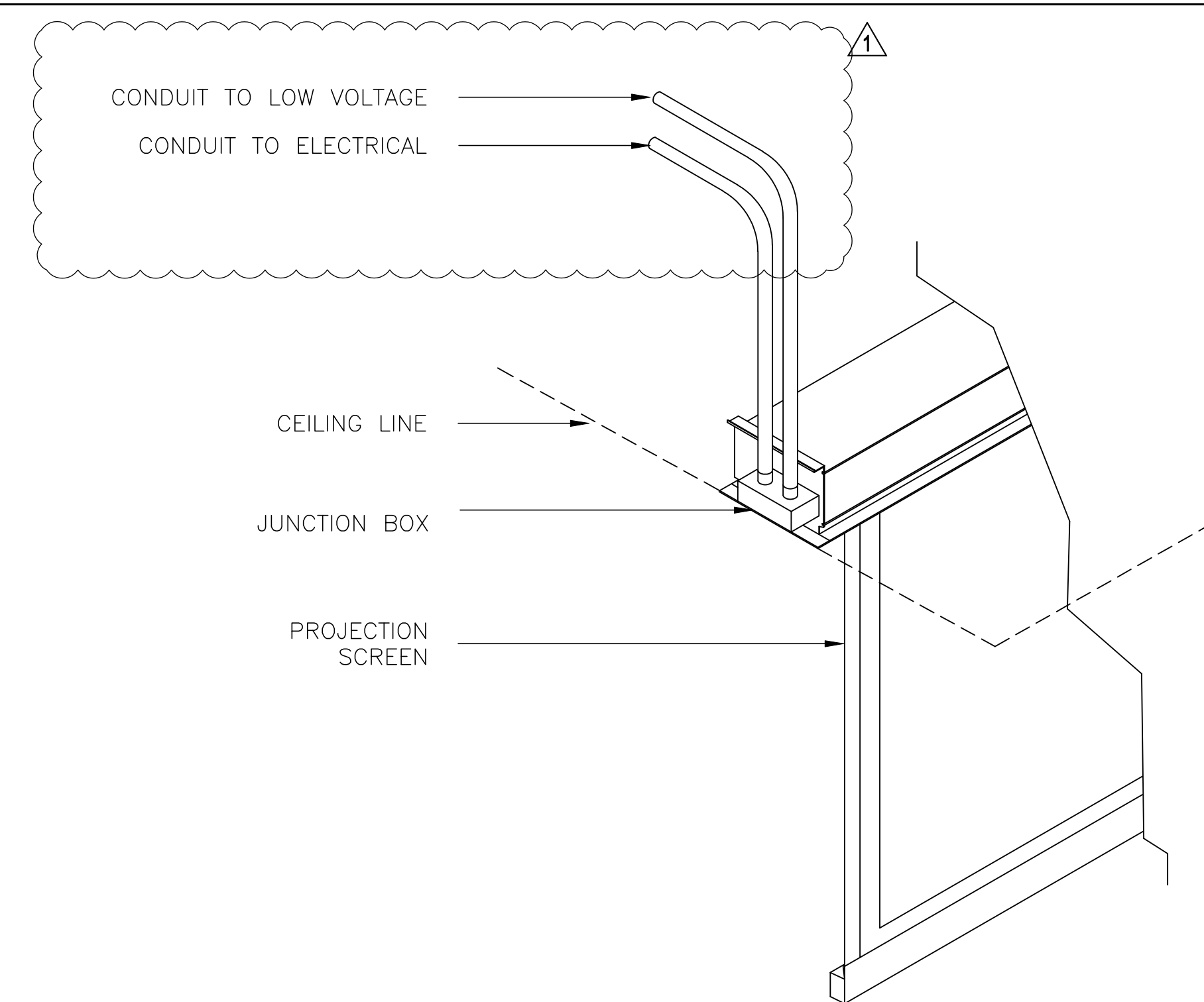
**NOTE:**  
REFER TO STRUCTURAL DRAWINGS  
FOR LOADING LIMITATIONS TO STRUCTURE,  
GENERIC DETAILS, AND ANCHOR REQUIREMENTS.  
ALSO, REFER TO STRUCTURAL DRAWINGS FOR  
MINIMUM SEISMIC REQUIREMENTS FOR  
CONFORMANCE WITH THE CODE, TYP.



### TYPICAL PROJECTION SCREEN AND VIDEO PROJECTOR DETAIL

SCALE:  
NTS

—



TYPICAL PROJECTION SCREEN DETAIL

SCALE:  
NTS

2

**PICO BRANCH LIBRARY**  
2201 Pico Blvd.  
Santa Monica, CA 90404

PROJECT

KoningEizenbergArchitecture

1454 25th St, Santa Monica, CA 90404

310.828.6131      info@kearch.com

310.828.0719 fax [www.kearch.com](http://www.kearch.com)

ARCHITECT'S PROJECT NO.

**1001**

ARCHITECT

All designs, ideas, arrangements and plans indicated by these drawings are the property and copyright of the Architect and shall neither be used on any other work nor be disclosed to any other person for any use whatsoever without written permission.

Koning Eizenberg Architecture and/or its principals and employees waives any and all liability or responsibility for problems that may occur when these plans, drawings, specifications, and/or designs are followed without the professional's guidance with ambiguities, or conflicts which are alleged.

W

**Veneklasen Associates**  
Consultants In Acoustics | AV | IT | Environmental Noise  
1711 17th Street  
Santa Monica, CA 90404  
(310) 450-1733  
[www.veneklasen.com](http://www.veneklasen.com)

CONSULTANT



City of  
**Santa Monica**  
Architecture Services

1437 4TH STREET, SUITE 300  
SANTA MONICA, CA 90401  
TEL. ( 310 ) 458-2205  
FAX. ( 310 ) 399-1541  
architecture@smgov.net

DATE : \_\_\_\_\_ 20 \_\_\_\_

SUBMITTED BY : \_\_\_\_\_

DATE : \_\_\_\_\_ 20\_\_\_\_

APPROVED BY :  
Miriam Mulder,  
Architecture Services Manager

CITY OF SANTA MONICA  
DEPARTMENT OF PUBLIC WORKS

REVIEWED BY: DATE: \_\_\_\_\_ 20\_\_

REVIEWED BY :      DATE :      20

REVIEWED BY :      DATE :      20

CITY CLIENT

3	07/16/12		BULLETIN 1
	06/21/12		PLAN CHECK 2
	05/07/12		PLAN CHECK 1
2	03/06/12		ADDENDUM 3
1	02/21/12		ADDENDUM 2
NO.	DATE	BY	DESCRIPTION

## ISSUE

## 100% CONSTRUCTION DOCUMENTS

DATE \_\_\_\_\_

07/16/2012  
DRAWING NO. **6693**

SHEET TITLE  
AV DETAILS

SHEET NO.

## AV6.01





